



## NOVEMBER 2015 Newsletter

Welcome to the second edition of Bedford Borough Safeguarding Children Board (BBSCB) newsletter. We think it is important to keep you up to date with information, especially what's going on in our local area. This newsletter provides an update on current safeguarding issues that are relevant to frontline practice and the work of the BBSCB. It also provides links and signposts to national documents that you may find helpful in your day-to-day work. The Board is always interested in receiving your views and sharing information about good practice locally so if there are any items you would like to go in the next edition please contact [sue.huckle@bedford.gov.uk](mailto:sue.huckle@bedford.gov.uk)

A handwritten signature in black ink that reads "Jenny Myers".

Jenny Myers | Independent Chair of Bedford Borough Safeguarding Children Board

## UPDATE FROM BBSCB

### Annual report

The Annual Report for 2014/15 was presented to the Strategic Board in September and is available to read [here](#).

### Changes to our structure

Further to discussions at the BBSCB Development Day on the 2<sup>nd</sup> June and the July meeting of the LISG a new structure has been proposed which means that the LISG will no longer exist. Please see the revised structure Chart on our [website](#)

Each Group has their own terms of reference and membership. This can be found on our website by following this [link](#)

Additional task and finish groups will be commissioned by the BBSCB as and when required. There is a process of change taking place over the next few months and

we will need to review the new structure to ensure it is delivering measurable improvements to the effectiveness of the Board.

## Leaflets

**What is the LSCB?** Has been refreshed and can be found [here](#)

## Multi Agency Training – joint between BBSCB and CBSCB

**IMPROVED AND EXTENDED FREE** LSCB E-Learning offer as of 1<sup>st</sup> Oct 2015

The LSCB has extended its provision of Safeguarding E-learning courses to over 36 different titles appropriate for workers and volunteers in contact with children and families, with a further 16 available for those working with vulnerable adults. Go to <http://bedfordshirelscb.safeguardingchildren.co.uk/> to log in or register for any of these courses. Provided the course is completed within 4 weeks there will be no charge.

**One of our new FREE E learning course offers is:**

### SAFER SLEEPING FOR BABIES

The Office of National Statistics (ONS) recently [released its latest figures for unexplained infant deaths in England and Wales](#). The number of babies who died as a result of Sudden Infant Death Syndrome (SIDS) had increased for the first time since 2008.

### FEMALE GENITAL MUTILATION

Find out more and how you can act to protect a child from this abuse or report this crime by completing the [On Line E learning package](#)

### DISABLED CHILDREN – KEEPING THEM SAFE - Fully revised 1 day course 18<sup>th</sup> Nov 2015

This course will be delivered by a specifically commissioned expert trainer and will incorporate recent local and national messages from Serious case Reviews and Audit, [Book your place](#) now.

### WORKING TOGETHER MODULES 1 AND 2 - EXTRA DATES

These fully updated courses are highly rated by delegates and in response to the increased demand there are now [extra dates](#). The [January to March 2016 Calendar dates](#) for all LSCB Courses are now available and open for applications.

## **FREE LSCB PRACTITIONER QUARTERLY UPDATES**

These are now a regular fixture on the LSCB Calendar – if you missed the last one then please go to the [LSCB website to watch the film clips](#) and download the handout materials. The [January 28<sup>th</sup> 2016](#) event is being planned and will make reference to the vulnerabilities of children living with parents or carers requiring support with parenting. Please book a place now.

CHRONOLOGIES, ASKING SENSITIVE QUESTIONS, WAYS OF ENSURING THE CHILD'S VOICE IS SOUGHT AND RECORDED - these topics are all in the planning stage and a range of LSCB learning opportunities will be made available over the next few months. Please check the [LSCB Training bookings website](#) for more news in the coming weeks.

## **NEW LOCAL GUIDANCE**

### **A Child Centred System: Understanding Thresholds Information on early help, prevention, and statutory services for everyone working with children and families.**

The **BBSCB** has published a 'thresholds document' setting out levels of need and access to Children's Social Care. This document provides a framework for professionals who are working with children, young people and families. It aims to help identify when a child or young person may need additional support to achieve their full potential. It introduces a continuum of help and support, provides information on the levels of need and gives examples of some of the factors that may indicate a child or young person needs additional support. By undertaking assessments and offering services on a continuum of help and support, professionals can be flexible and respond to different levels of need in different children, young people and families. The framework recognises that however complex a child or young person's needs, universal services e.g. education and health, will always be provided alongside any specialist additional service.

### **The Four Levels of Need are;**

#### **Level 1: Universal**

Children, young people and families are generally progressing well and achieving expected outcomes. Their core needs are being met effectively by universal services without any additional support.

#### **Level 2: Early help / Intervention**

Children, young people and families are experiencing emerging problems which result in them not achieving outcomes. They are likely to require early help/intervention for a time limited period, to seek to move them back to Level 1. Children subject to Education, Health and Care (EHC) plans.

#### **Level 3: Targeted**

Children, young people and families who are experiencing significant additional needs, which may be numerous or more serious/complex in nature. This is having a significant impact on their achievement of expected outcomes and is likely to require more targeted support, potentially from a number of agencies. This may require the identification of a lead professional to co-ordinate the support provided to the family. This may meet the threshold for an assessment led by children's social care under Section 17, Children Act 1989 although the assessments and services required may come from a range of provision outside of children's social care. Children or young people subject to an EHC plan may well be accessing targeted support.

#### **Level 4: Specialist**

Children, young people and families who are experiencing very serious or complex needs that are having a major impact on their achievement of expected outcomes. Their needs will be such that they require intensive support from specialist services. These children or young people are suffering or are likely to suffer significant harm. This is the threshold for child protection. This level also includes Tier 4 health services which are very specialised services in residential, day patient or outpatient settings for children and adolescents with severe and /or complex health problems. This is likely to mean that they may be referred to children's social care under section 20, 47 or 31 of the Children Act 1989. This would also include those children or young people remanded into custody and statutory youth offending services.

This document should be used in conjunction with Bedford Borough Safeguarding Children Board procedures: <http://bedfordscb.proceduresonline.com/>

The document can be downloaded from our website using [this link](#)

## NEW POLICIES, PROCEDURES OR GUIDANCE

New Chapters and Features	
Chapter	Details
Neglect	This chapter has been added to the manual.
Learning from Local Area SCR'S	This chapter has been added to the manual.

### Full list of changes to local policies, procedures or guidance

Chapter	Details
<b>Responding to Abuse and Neglect</b>	This chapter gives an overview of the concept of significant harm, early help, definitions of abuse and making a referral. It replaces the previous chapter Recognising and Responding to Concerns about the Welfare of a Child.
<b>Bedford Single Assessment</b>	Links have been included to the Single Assessment process for each area.
<b>Child Protection Enquiries</b>	This chapter provides the steps for how to undertake a Strategy Discussion / meeting and how to conduct Section 47 Enquires and replaces the previous chapter Action to be taken where a Child is Suffering or Likely to Suffer Harm.
<b>Organised and Complex Abuse</b>	This chapter provides a procedure for agencies about the investigation of complex and organised abuse and information about what action they should take if they suspect such abuse.
<b>Historical Abuse Allegations</b>	This chapter deals with the significance and response to historical abuse.
<b>Female Genital Mutilation</b>	This chapter deals with the definition, the law and action and protection.
<b>E-Safety: Children Exposed</b>	This chapter deals with the definition, risks and

<b>to Abuse through the Digital Media</b>	action to be taken.
<b>Children Visiting Custodial Settings</b>	This chapter sets out the procedures for managing risks and safeguarding the wellbeing of children and young people, who may be visiting or having contact with adults or other young people who are in a custodial setting.
<b>Working with Hostile, Non-Compliant Clients and those who use Disguised Compliance</b>	This chapter replaces Understanding and Responding to Uncooperative and Confrontational Families.
<b>Procedure for Children that have a Dual Status (Bedford Borough Council)</b>	This deals with the process of assessment for the discontinuation of a Child Protection Plan when child is subject to both a Child Protection Plan and Child Looked After.
<b>Bedford Borough Safeguarding Children Board 'Safeguarding Children and Young People From Neglect'</b>	This guidance has been produced because it is recognised that neglect is a complex and multifaceted issue, which can often be difficult for professionals to address effectively.
<b>Flow Chart for Seeking Specialist Medical Opinion in Cases of Child Abuse &amp; Neglect (Except Acute Sexual Abuse)</b>	This flowchart has been added to the manual.
<b>Guidance for Safe Recruitment, Selection and Retention for Staff and Volunteers</b>	This guidance applies to all adults who have contact with children, young people and Adults at Risk through their work whether in a paid or voluntary capacity. It applies to permanent, temporary and agency staff and to those recruited from overseas. It also applies to staff who do not have direct responsibility for children, but who will have contact with children within the organisation and will be seen as safe and trustworthy and/or have access to confidential and sensitive information e.g. administrative staff, receptionists,

	caretakers, maintenance workers.
<b>People Posing a Risk to Children - Guidance and Procedure</b>	This guidance has been added to the manual.

## List of Updates - June 2015

Updated Chapters	
Chapter	Details
<b>Escalation Procedures</b>	A link has been added to Raising Concerns at Work: Whistleblowing Guidance for Workers and employers in Health and Social Care (2014).
<b>Safeguarding Children who may have been Trafficked</b>	This chapter has been amended in line with Care of Unaccompanied and Trafficked Children: Statutory Guidance for Local Authorities on the Care of Unaccompanied Asylum Seeking and Trafficked Children (2014). It should be re-read in its entirety.
<b>Safeguarding Children who Run Away and Go Missing from Home and Care</b>	A link has been added to The International Child Abduction and Contact Unit.
<b>Female Genital Mutilation</b>	A link has been added to the Female Genital Mutilation Resource Pack - GOV.UK.
<b>Safeguarding Children in Faith Settings</b>	A link has been added to the Safe Network - Multi-faith Safeguarding Hub in Related Information.
<b>Working with Families in which</b>	A link has been added to the Postnatal

<b>the Problematic Use of Drugs and Alcohol is an Issue</b>	Care NICE Clinical Guideline 37 in Related Information.
<b>Agency Roles and Responsibilities</b>	This chapter has been updated to take account of the changes in Working Together to Safeguard Children 2015.
<b>Guidance for Safe Recruitment, Selection and Retention for Staff and Volunteers</b>	This chapter has been extensively updated and should be read throughout.
<b>Local Contact Details</b>	This chapter has been amended.

## LEARNING FROM LOCAL AUDITS

The purpose of our auditing process is to provide a stringent and consistent approach to assessing work undertaken on a multi-agency or single agency basis with a child/young person and their family through an audit of case records, particularly in relation to the safeguarding role of both specialist and non-specialist practitioners.

Following the audit process we will aim to;

- Enable identification of learning points from areas that are working well and those which need improvement.
- Enable Bedford Borough to prepare for Ofsted's full inspection of safeguarding and looked after children with its particular focus on outcomes for children.
- Enable outcomes from a set of individual audits to be drawn together into an overview report which will;
- Enable the BBSCB to carry out its function of monitoring the effectiveness of what is done to protect children and promote their welfare.
- Promote service improvement through identification of key practice issues so that recommendations can be drawn together and action plans implemented.
- Feed into policy and practice protocols and learning and development activity.



It is also important to note that learning from good practice identified through audit and how this can be consistently achieved in order to make a difference for children is at least as important as learning from shortcomings.

### **Multi-Agency Audit Overview Report of children who were the subject of repeat child protection (CP) plans under the category of neglect**

This report provides an overview of Bedford Borough Safeguarding Children Board's peer audit undertaken in January/February 2015. The focus of the audit was children and young people who were the subject of repeat child protection (CP) plans under the category of neglect. A dip sample of 3 sibling groups, each case had at least 3 agencies involved and the children and young people ranged from 4 months to 16 years. In addition the sample reflected different cultural backgrounds and included children with disabilities. To see this audit please follow [this link](#)

## **OTHER LOCAL NEWS**

### **New look domestic abuse support website launches**

The Bedfordshire Domestic and Sexual Abuse Partnership launched a new look website ([www.bedsdv.org.uk](http://www.bedsdv.org.uk)) on 1<sup>st</sup> September 2015. The new website, which is now also available to access from mobile phones and tablets, offers quicker and easier on-line support for victims of domestic and sexual abuse and is also designed to support professionals by helping them to signpost victims by providing information, practical support and advice. To further encourage victims and to make them feel even safer to access the website an extra feature has been added - 'hide my visit'.

To aid this, the new look website has a 'hide my visit' button which is extremely important to victims and survivors of domestic and sexual abuse. The website provides information, practical support and advice.

The Bedfordshire Domestic & Sexual Abuse Partnership brings together the main statutory and voluntary agencies which help to provide and improve services in relation to domestic abuse and sexual abuse across Bedfordshire, and is a shared provision between Bedford Borough Council and Central Bedfordshire Council. To check out the new website, visit [www.bedsdv.org.uk](http://www.bedsdv.org.uk)

**Bedfordshire Clinical Commissioning Group (BCCG)** Fact sheets - Would you know what to do if your child is unwell or injured? A range of fact sheets have been specially designed to help parents or anyone who looks after a child. They will advise what to do, to look after a poorly child who needs urgent healthcare, and where to get the best help. The factsheets are available on the website [here](#).

**The Hope Programme** and **Sorted** are pioneering a counselling service for children and young people aged 10-17 years who are victims of rape, sexual violence & child sexual exploitation and live in Bedford Borough. A reminder that this service started on Monday 3 August 2015 and will help the vulnerable victims to cope and recover from the aftermath and trauma of the crimes. Further information [here](#).



## **EARLY HELP AND INTERVENTION**

The Bedford Borough Council Early Help and Intervention Service officially went 'live' on the 1st September. Their webpages are [www.bedford.gov.uk/earlyhelp](http://www.bedford.gov.uk/earlyhelp) for all information, updates and documents relating to Early Help.

There are a number of new initiatives and exciting projects taking place this term with more details within this newsletter.

Please continue to use your Early Help Professional as a single point of contact for any queries or questions around our new service and what we can do to support you and the families within your community.

## **RELAY Scheme**

Please also look out for an email relating to Information Sharing for RELAY. It is vital we adhere to appropriate procedures in order to safeguard the sensitive information we will be passing onto you.

Thank you in advance for your support here.

Again all information and documentation relating to RELAY can be found on the Early Help webpages.

## Behaviour Support Hub

Greys Education Centre have been commissioned for to provide an Early Help Behaviour Support Hub.

The focus of this hub will be holistic outreach into mainstream schools to support children and young people who are beginning to display challenging behaviour at the earliest stage. Access to the hub will be via an Early Help Assessment sent to [multi.agency@bedford.gov.uk](mailto:multi.agency@bedford.gov.uk)

Watch out for communication specifically around this project and the elements of support available. The project begins in September.

## Early Help Assessment and Team around the Family

The new family based Early Help Assessment is now finalised and can be found on the Early Help webpages. Further information around Team around the Family processes, procedures and documentation can also be found on our web pages. Please don't hesitate to contact Sarah Rayner on [sarah.rayner@bedford.gov.uk](mailto:sarah.rayner@bedford.gov.uk) or 01234 276817 with any queries.

## Early Help Guide

Check out the site for information on services available in Bedford Borough that support children young people and families at an Early Help level.

<https://earlyhelp.bedford.gov.uk>

## Workforce Development

Over the Autumn Term we will be starting a new programme of Early Help Workforce Development. There will be various training available to all schools and partners and more information about what's on offer, times and locations will be available very soon.

Highlights on what is coming up can be found on the Early Help webpages.

The Early help team are keen ensure that all important communication reaches the right people. If you would like an alternative email address to the one they currently send to, please contact [june.hickman@bedford.gov.uk](mailto:june.hickman@bedford.gov.uk) with the correct contact.

## FORCED MARRIAGE

A forced marriage is where one or both people do not (or in cases of people with learning disabilities, cannot) consent to the marriage and pressure or abuse is used. It is an appalling and indefensible practice and is recognised in the UK as a form of violence against women and men, domestic/child abuse and a serious abuse of human rights.

Approximately 8,000 to 10,000 forced marriages of British citizens take place every year.

Forced marriage is now illegal and the first prosecutions have taken place.



## Where to Find Help

Police Emergency 999

Bedfordshire Police Honour Base Abuse Unit

Luton - 01582 474356

## Further Information and Support

Forced Marriage fact sheet - [Click here to go to the fact sheet](#)

For more information please visit our dedicated page on our website on Forced Marriage using [this link](#)

## Local posters

Bedfordshire Police have produced two posters on forced marriage

[Poster one](#)

[Poster two](#)

If you would like copies either in A4 or A5 formats then please contact

[rebecca.Croft@bedfordshire.pnn.police.uk](mailto:rebecca.Croft@bedfordshire.pnn.police.uk) or

[esther.morris@Bedfordshire.pnn.Police.uk](mailto:esther.morris@Bedfordshire.pnn.Police.uk)

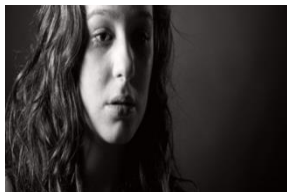
## E-learning training by Virtual College

This free online course has been developed with the Forced Marriage Unit of the Foreign and Commonwealth Office and Home Office. The course raises awareness, challenge perceptions and informs you of the correct actions to take. [Click here](#) to access the course.

## CHILD SEXUAL EXPLOITATION (CSE)

### What is CSE?

CSE is a form of child abuse involving children and young people receiving something, such as accommodation, drugs, gifts or affection, as a result of them performing sexual activities, or having others perform sexual activities on them. It can occur without physical contact, when children are groomed to post sexual images of themselves on the internet.



### Key facts about CSE

- Sexual exploitation often starts around the age of 10 years old. Girls are usually targeted from age 10 and boys from age 8.
- It affects both girls and boys and can happen in all communities.
- Any person can be targeted but there are some particularly vulnerable groups: Looked After Children, Children Leaving Care and Children with Disabilities.
- Victims of CSE may also be trafficked (locally, nationally and internationally).
- Over 70% of adults involved in prostitution were sexually exploited as children or teenagers.
- Sexual violence or abuse against children represents a major public health and social welfare problem within UK society, affecting 16% of children under 16. That is approximately 2 million children.

*Do you know the signs of child sexual exploitation? That's the question being asked by organisations across Bedfordshire involved with the 'the more you know, the more you see' campaign.*

Bedfordshire Police, the University of Bedfordshire, Bedford Borough, Luton Borough and Central Bedfordshire Councils, Crimestoppers, and the three local safeguarding children boards are joining forces to tackle CSE with this new campaign. The campaign aims to educate people on the signs that someone is being exploited, and increase the number of cases that are reported. As part of the campaign, a new website has been launched which contains links and information about all of the agencies taking part, and explains how you can access

help and support, as well as where to report CSE concerns. Posters and leaflets are available [here](#)

*Jenny Myers, Independent Chair of the BBSCB, said: "CSE can be tricky for people to recognise which is why a tip-off from someone who may have noted something which doesn't seem quite right, can be so incredibly valuable. This new website will act as a great hand-holding device for those seeking more information on safeguarding issues. The website offers help and support every step of the way in terms of pointing individuals in the right direction, should they feel they need to highlight a child they believe to be at risk, in order for professionals to deal with it. For more information, please access the CSE pages on the BBSCB website [www.bedford.gov.uk/lscb](http://www.bedford.gov.uk/lscb).*

If you are concerned about CSE, you can call police on 101 or visit

<http://www.bedfordshireagainstcse.org/>

For further information. If people think a child or young person is being abused or mistreated or they have concerns about the safety or welfare of a child or young person, they must speak to someone immediately. They can ring the Bedford Borough **Multi Agency Support Hub (MASH) on 01234 718700 (office hours) or ring 0300 300 8123**

**(out of hours)**. If their concern is of an immediate safeguarding nature, they should contact the Police by ringing 999.



### University of Bedfordshire films and resources on CSE

<http://www.beds.ac.uk/ic/films>

A series of short videos produced by the University of Bedfordshire relating to CSE research and practice that you might find useful and interesting. These 12 films are aimed at anyone who wants to access learning from the latest research on child sexual exploitation (CSE), in a short accessible form. Most of the films are under two minutes long. Each film is accompanied by a short briefing document that outlines the evidence in more detail, with references and links to the original research, and questions for reflection

A broad range of CSE themes are covered in the 12 films ranging from 10 key facts about CSE to successful reintegration for separated children. You can find them [here](#):

## CHELSEA'S CHOICE

### Raising Awareness around Child Sexual Exploitation

The BBSCB has secured funding for Chelsea's Choice performed by AlterEgo Theatre Company for 2 weeks of performances to participating Schools in Bedford Borough in November/December 2015.



*Chelsea's Choice tells the story of a group of three students who discover the diary of a girl called Chelsea. Chelsea was a young girl who, having fallen out with her friends and family, was approached by a man called Gary. Gary was older, owned a car, had a flat and treated her like an adult. Unfortunately Gary was not what he seemed to be! Chelsea's story is played out and examined by the three students along with their teacher in an attempt to understand what happened to Chelsea and how it could have been prevented.*

### THE PLAY HAS BEEN SEEN BY THOUSANDS OF YOUNG PEOPLE & HUNDREDS OF PROFESSIONALS & HAS PROVEN HIGHLY EFFECTIVE IN:-

- Raising Awareness of Healthy Relationships
- Promoting Safe Internet Use
- Identifying Risky Situations
- Raising Awareness of The Grooming Process & the differing forms that it can take
- Raising Awareness of Child Sexual Exploitation & the differing forms that it can take
- Sign-posting relevant services

We will be hosting 2 evening performances for parents/carers – these details will be sent to each participating school for them to send around to parents/carers of pupils in their school.

If you have any questions about Chelsea's Choice and any of the performances please contact Sue Huckle at the BBSCB on 01234 276512 or email [sue.huckle@bedford.gov.uk](mailto:sue.huckle@bedford.gov.uk)

## ESCALATING A CONCERN - What to do when you are concerned about a decision or practice in a case involving a child or young person.

It is the view of the BBSCB that constructive challenge amongst colleagues within agencies and between agencies provides a healthy approach to planning to keep children safe. However, sometimes an issue cannot be resolved and protocol/procedures are needed to escalate concerns, while keeping the focus of concern on the child and their needs. **These documents are not designed to replace the statutory complaints processes established within individual partner agencies.**

All agencies are responsible for ensuring that their staff are supported and know how to appropriately escalate and resolve interagency concerns and disagreements about a child or young person's well-being and the response to safeguarding needs.

- Disagreements between practitioners and agencies can arise at any stage in the safeguarding process and between any of the agencies involved. For example:
- The lead agency or professional cannot be agreed upon (this can be at step down or step up to/from children's social care intervention).
- A referral is not considered to meet the eligibility criteria for assessment by Children's Social Care.
- There are differing views in respect of whether a referral is considered to meet eligibility criteria for Child in Need or Child Protection;
- Referring agencies are not responded to by Children's Social Care within the timescales set out in the LSCB procedures;
- There is difference of opinion with regard to the need or detail of child in need or child protection plan, or an assessment decision;

There will always be differences of professional opinion. However, practitioners and agencies have a responsibility to challenge when it is believed that other agencies are failing to recognise child maltreatment and/or their response leaves children at risk of significant harm. The Pan Bedfordshire Escalation procedures have been developed to ensure partner agencies have a quick and straightforward means of resolving professional differences in view of specific cases, in order to safeguard the welfare of children and young people.



Effective working together depends on resolving disagreements to the satisfaction of workers and agencies, and a belief in a genuine partnership and joint working to safeguard children. Problem resolution is an integral part of professional cooperation and joint working to safeguard children. Professional disagreement is only dysfunctional if not resolved in a constructive and timely fashion.

At no time must professional disagreement detract from ensuring a child is safeguarded. The child's welfare and safety must remain paramount throughout.

Where such disagreements arise between practitioners in the same agency, they should use that agency's own procedures for their resolution. The following process is intended for use only when disagreement arises between agencies. When there is recognition that there is a disagreement over a significant issue, which potentially impacts on the safety and welfare of a child, the respective workers must identify explicitly what the problem is and have absolute clarity about the nature of the disagreement and what the respective workers aim to achieve.

A clear record must be kept at all stages, by all parties, in particular this must include written confirmation between the parties about an agreed outcome of the disagreements and how any outstanding issues will be pursued.

Please access the procedures at the following link of the Pan Bedfordshire Interagency Child Protection Procedures Chapter 2.8

[http://bedfordscb.proceduresonline.com/chapters/p\\_reolution\\_disagree.html](http://bedfordscb.proceduresonline.com/chapters/p_reolution_disagree.html)

## FEMALE GENITAL MUTILATION

FGM is a procedure which involves partial or total removal of the external female genitalia or other injury to the female genital organs for non-medical reasons. Over summer an increased number of young girls are taken abroad to have FGM performed so that they can 'heal' over the long holidays – mainly to avoid detection when they return to school.



**If you have concerns that a girl or young woman is at risk of FGM, call the Police on 101. In an emergency call 999. The NSPCC provides a 24/7 FGM helpline,**

**which can be used for advice and support: 0800 028 3550 at [fgmhelp@nspcc.org.uk](mailto:fgmhelp@nspcc.org.uk)**

### New guidance

The **Department of Health** has published new guidance for England on commissioning services for women and girls with FGM. Issues covered include: service standards, scope of service, and future prevention work. Visit their [website](#) using this link to see the full document –

Also visit the **NSPCC** [website](#) for more details on FGM –

### New Law

Female Genital Mutilation Protection Orders came in to force on the 17 July 2015 in England, Northern Ireland and Wales. FGM Protection Orders are unique to each case and contain legally binding conditions, prohibitions and restrictions to protect the person at risk of FGM.

Visit the Family Law [website](#) for more details –

The Serious Crime Act 2015 introduced a new duty on teachers, social workers and healthcare professionals to report to the police known cases of female genital mutilation involving victims aged under 18. This duty came into force on 31 October 2015. Read the guidance: 'Mandatory reporting of female genital mutilation: procedural information' using this [link](#)

### Free FGM e-learning

The Home Office has launched free online training for frontline professionals in identifying and helping girls at risk of FGM. This comes as figures are released revealing that police forces have investigated dozens of FGM cases over the last three years. The training can be accessed by visiting the website:

<http://www.fgmelearning.co.uk/>

Coventry University has designed a new app to educate young people about female genital mutilation. It is endorsed by the NSPCC and has been launched in the run up to the school summer holidays, a period during which a girl's risk of being taken abroad to undergo the procedure increases. For more information visit their website using this link - <http://petals.coventry.ac.uk/>

## INFORMATION SHARING

The **Department for Education** has issued Safeguarding practitioners: [information sharing advice](#) for practitioners providing safeguarding services to children, young people, parents and carers.

### Key points about information sharing

Explain to people openly and honestly what information you will share, with whom and why. The only time that you should not do this is, if letting them know, will leave someone at risk of significant harm.

You should respect the wishes of family members if they do not want information shared unless someone will be placed at risk of significant harm if you don't share the information.

If in doubt speak to your manager or have a general discussion with children's services, by which we mean, one where you do not necessarily share the name of the family.

Make sure that the information that you are sharing is accurate, up to date, necessary for the purpose for which you are sharing it and only shared with those who need to know it. The information should also be shared securely. Having decided to share information you need not tell everyone everything.

You should always record the reason for your decision; whether you shared the information or not.

### The importance of proportionality

The word proportionality is rather jargonistic but it explains a very helpful concept. It accepts that the decision about sharing information is not a simple 'yes' or 'no' decision but depends upon a number of factors.

- How at risk is the young person?
- Is the risk imminent?
- How much safer will the young person be if the information is shared?
- Will the relationship between professionals and the family be so damaged by sharing information against their wishes that it may be better to not share?
- Does the information need to be shared now? Could it wait until the family have changed their mind about agreement?

Sometimes you may not be able to answer the questions above. In this case it is best to contact one professional and share information with them. Following a

discussion you may be clearer about what to do. If not, contact one further professional.

### Understanding consent

Consent must be informed which means that the person who has given consent understands

- what will happen to the information
- who will be told what
- who they will then tell
- why people are being told the information.

**For more information on this please visit their website using this [link](#)**

## ONLINE ABUSE

The Home Office, in consultation with organisations including the NSPCC, has published a guide for professionals working with young people on preventing online abuse and bullying. 20 March 2015



[Online abuse and bullying prevention guide for professionals working with young people \(PDF\)](#)

## NEW INITIATIVE – O2 and NSPCC

O2 have recently joined forces with the NSPCC in a bid to keep children safe online. This initiative aims to help UK parents and children to understand the dangers that exist online through a creative, fun and exciting way. This includes:

- Launch of an online safety helpline for parents to call for technical advice
- Bringing online safety workshops for parents and carers into schools and workplaces
- Training staff so that all O2 stores can help adults with their online safety concerns



The online site also includes useful information for parents/carers and young people on the following:

- Protecting kids online – stop your children from seeing unsuitable content
- What to share online – keep your children’s details secure
- Strangers online – discuss the risks of unknown online connections
- Online bullying – know the signs of bullying and where it can happen
- Online addiction – keep an eye on how much time is spent online
- Downloading – show your kids how to legally get hold of content

For more information on the joint initiative between O2 and NSPCC please use the following link: <http://www.o2.co.uk/help/nspcc>

### Nude selfies: What parents and carers need to know

The National Crime Agency, has launched a campaign for parents to deal with an increase in young people sharing nude selfies.

To give parents the tools to deal with these issues and reduce the dangers of sexting, CEOP have created a series of short animations entitled ‘[Nude selfies: What parents and carers need to know](#)’. The new [Thinkuknow films](#) are packed with information and advice on helping parents to advise children about avoiding taking risks online, knowing what’s safe and what’s not, and where to get help if anything goes wrong. The four films are available to [watch for free online](#), cover the following issues:

Film 1: Helps parents and carers understand the reasons why young people create and share nude or nearly nude images.	Film 2: Helps parents and carers learn about effective strategies for talking to your child about nude or nearly nude images.
Film 3: Helps parents and carers understand how to respond if your child discloses that they have shared nude or nearly nude images by risk assessing the different contexts in which images may be shared.	Film 4: Helps parents and carers learn about how to get help and support if your child shares nude or nearly nude images.

The NSPCC has published new advice for parents on how to talk to children about the risks of online pornography and sexually explicit material. Visit their website for more information - <http://www.nspcc.org.uk/preventing-abuse/keeping-children-safe/online-porn>

## RADICALISATION

The Department for Education has issued advice and social media guidance to schools and childcare providers to help them keep children safe from the risk of radicalisation and extremism.

### Further information:

[Protecting children from radicalisation: the prevent duty \(PDF\)](#)

[The use of social media for online radicalisation \(PDF\)](#)

Further information and application form available [here](#).

## PREVENT

*Prevent* is part of the Government’s counter-terrorism strategy CONTEST which aims to stop people becoming terrorists or supporting terrorism. The *Prevent* strategy addresses all forms of terrorism and prioritises according to the threat posed to national security.

Responsible authorities are local authorities, schools, further and higher education, the health sector, prison, probation and the police. Further information can be found in the guidance by using this [link](#)

The strategy has three main objectives:

- Objective one:** Ideology – respond to the ideological challenge of terrorism;
- Objective two:** Supporting vulnerable people – prevent people from being drawn into terrorism; and
- Objective three:** Work with key sectors and institutions – address risks.

The Counter Terrorism and Security Act received Royal Assent in February 2015 and will be reviewed regularly. For more information please visit

<http://www.ltai.info>

Prevent online training - <http://www.foundationonline.org.uk/>

### Bedfordshire Police contact information

DS 957 Mary Robinson is now the Prevent Sergeant for Luton and Helen Brooke is the DS for Beds and Central Beds.

Email address is [Prevent@bedfordshire.pnn.police.uk](mailto:Prevent@bedfordshire.pnn.police.uk)

## SPOTLIGHT ON NEGLECT

The NSPCC has recently launched a new campaign – spotlight on neglect – which the NSPCC says is the most common form of child abuse in the UK, and the top concern amongst adults contacting their helpline since 2006. Over October, the NSPCC will be sharing their latest research on effective prevention and intervention in neglect.

### Reports out this month via the NSPCC

‘Spotlight on preventing child neglect’

‘Thriving Communities: A framework for preventing and intervening early in child neglect’

‘Realising the Potential: Tackling child neglect in universal services’

‘Hurting Inside: An NSPCC report on the learning from the NSPCC helpline and ChildLine on neglect’

The above reports can be found on the NSPCC website:

[www.nspcc.org.uk/tacklingneglect](http://www.nspcc.org.uk/tacklingneglect)

The NSPCC has published a report drawing on the views of health visitors, school nurses, GPs, midwives, teachers, early help practitioners and young people exploring what help is currently provided by universal services to tackle child neglect, what the barriers are to providing early help and what stakeholders' views are on how services can be better supported to provide early help. It sets out a model for early help for neglect in universal services and makes recommendations for what is required to get there.

NSPCC press release 20 October 2015

[Realising the potential: tackling child neglect in universal services \(PDF\)](#)

### Neglect Practitioner Event

A Neglect Practitioner Event was held on the 24th Sept 2015 for Bedford Borough and Central Bedfordshire. Anonymised case studies from this event are also provided below for your learning:

- [Case study 10](#)
- [Case study 11](#)
- [Case study 12](#)
- [Case study 13](#)
- [Case study 14](#)

- [Case study 15](#)

## NATIONAL UPDATES

### [How safe are our children?](#)

NSPCC has published its annual 'How safe are our children?' report on the extent of abuse and neglect in the UK. Findings include: all 4 countries in the UK have seen the number of recorded sexual offences against children increase over the last year; there has been an increase in contacts to the NSPCC helpline and ChildLine about sexual abuse; and neglect remains the most common form of child abuse in the UK.

**Published June 2015**

### [Information Sharing](#)

The Department for Education has published advice for safeguarding professionals on information sharing. The advice explains relevant legislation and includes key principles and practicalities of sharing personal information. This advice replaces 'Information sharing: guidance for practitioners and managers' (2008).

**Updated 26 March 2015**

### [Keeping Children Safe in Education](#)

The Department for Education has published new guidance for schools and colleges on safeguarding and promoting the welfare of children. It replaces the 2014 guidance.

**Updated 26 March 2015**

### [What to do If .....](#)

[What to do if you're worried a child is being abused: advice for practitioners \(PDF\)](#).

The Department for Education has published new advice for professionals on identifying and responding to child abuse. It replaces the previous version of 'What to do if you're worried a child is being abused' (2006).

**Updated 26 March 2015**

## Working Together

The Department for Education has published a revised version of the Working Together to safeguard children guidance. Changes include: guidance on notifiable incidents and a definition of serious harm.

The revisions include changes to:

1. the referral of allegations against those who work with children;
2. notifiable incidents involving the care of a child; and
3. the definition of serious harm for the purposes of serious case reviews.

Please find a link to the revised guide <http://www.workingtogetheronline.co.uk/>

**Updated 26 March 2015**

The NSPCC Information Service has published an article explaining how the new Working Together guidance impacts on people working with children in England. We have also published two new briefings: on information sharing and confidentiality for professionals and a summary of the updated statutory guidance for schools in England.

[Information sharing and confidentiality for practitioners - things to know and issues to consider \(PDF\)](#)

[Briefing on updated statutory guidance for schools in England - keeping children safe in education \(PDF\)](#)

**Updated 8 April 2015**

## CHANGES IN LAW

### Change of law regarding smoking in cars and other vehicles with someone under 18:

**From 1 October 2015** it is illegal to smoke in a car or in other vehicles with anyone under 18 present. Update from the Department of Health [here](#).

## Modern Slavery

The UK anti-slavery commissioner has set out his first plan of action for tackling modern slavery. Measures include: helping victims feel safe and able to disclose; making sure police know how to respond to victims and record and investigate criminal activities; raising awareness of slavery with staff in hospitals, schools and councils.

[Independent anti-slavery commissioner: strategic plan 2015-2017](#)

Modern slavery helpline is 0800 0121 700 and website address is

<https://modernslavery.co.uk>

## USEFUL CONTACTS

### Bedford Borough Safeguarding Children Board

5<sup>th</sup> Floor, Borough Hall, Cauldwell Street, Bedford, Mk42 9AP

Telephone: 01234 276512

Email: [LSCB@bedford.gov.uk](mailto:LSCB@bedford.gov.uk) Website: [www.bedford.gov.uk/lscb](http://www.bedford.gov.uk/lscb)

### BBSCB and CBSCB training enquiries:

Telephone: 0300 300 6676

Email: [LSCB.Training@centralbedfordshire.gov.uk](mailto:LSCB.Training@centralbedfordshire.gov.uk)

### Local authority designated officer (LADO):

Bedford Borough – Karen Osborne - 01234 276693 / 276560

Email: [LADO@bedford.gcsx.gov.uk](mailto:LADO@bedford.gcsx.gov.uk)

### Support and safeguarding services

If you think a child is being abused or neglected, contact:

MASH (Multi Agency Safeguarding Hub)

Telephone: 01234 718700 Monday - Thursday 8:50am - 5:20pm, Friday 8:50am - 4:30pm. Email: [multiagency@bedford.gov.uk](mailto:multiagency@bedford.gov.uk)

Out of Hours (0300 300 4200)

**If a child is suffering abuse and requires urgent attention because of immediate danger, call the police on 999 or 111**