



# **Bedford Borough Safeguarding Children Board**

Annual Report 2012 - 2013

## Contents

The Bedford Borough Safeguarding Children Board Annual Report 2012 – 2013, has been contributed to by all BBSCB Board members and produced by the BBSCB Independent Chair and Business Manager. The report was approved by the Board at their meeting in October 2013.

1	Independent Chair’s Introduction and Summary of Safeguarding Children	3
2	Bedford Borough in context	4
3	Governance and accountability	4
4	Child Protection Activity & Performance in Bedford Borough	7
5	Audit and challenge	9
6	Engagement with & participation of children	14
7	Achieving our priorities	17
8	Multi-Agency training	23
9	Priorities for BBSCB for 2013-14	24
	Glossary	26
	Appendix A – BBSCB Governance structure	27
	Appendix B – Membership Information	28
	Appendix C – Multi-agency training	29
	Contact...	30

## 1. Independent Chair's introduction and summary of safeguarding children

I am pleased to present the Bedford Borough Safeguarding Children Board [BBSCB] Annual Report covering the period April 2012 to March 2013. This report provides an overview of the Board's work, our view on the effectiveness of local arrangements for safeguarding children and young people, the challenges we face and our priorities for meeting these over the next three years.

I joined the BBSCB this March 2013 as the new independent chair. I hope I have brought a sense of direction and challenge to build on existing good work and build an effective, robust BBSCB which really put the needs of Bedford's children first and makes a difference to their lives, particularly when they are in need of safeguarding and protection from harm. I look forward to sharing with you both some of the achievements made but also outlining the things we need to do more of or better. Since taking over as chair I have led an effectiveness review which made a series of recommendations for change and I am confident that once in place these will really make a difference to the way the board works and increase its impact.

Despite the continuing budgetary pressure on partners, this report provides plenty of evidence of the commitment and determination among professionals to keep children and young people in Bedford Borough safe. This was reinforced by Ofsted during their unannounced inspection of local authority arrangements for the protection of children in January who found the overall effectiveness were adequate and commented "that the vision for children's services and joint working was clearer and underpinned by a sense of leadership and challenge." However, they also found that the BBSCB, although also functioning adequately, was not providing the focus needed to support the improvement in its current format. I believe that we have really begun to address this in our new structure and by setting core priorities which are outlined in this annual report.

The revised statutory Working Together (2013) guidance was published by the government in April and really raises the expectations of LSCBs (Local Safeguarding Children Boards) to ensure the effectiveness of services to children and families including early help. This ambition if addressed successfully over a period of time, will mean agencies genuinely provide the help needed to support children and families early enough to prevent problems escalating.

Finally, on behalf of the BBSCB I would like to thank all organisations and individuals in the public, voluntary and private sectors who work so hard across Bedford Borough to improve the outcomes and quality of life of our children and young people. If we are to continue to achieve the best for children we all need to continue to work together and ensure that the duty to safeguard and protect is "Everyone's" responsibility.

**Jenny Myers**

Independent Chair Bedford Borough Safeguarding Children Board

## 2. Bedford Borough in context

Bedford Borough Council became a unitary authority in April 2009 and assumed responsibility for children's social care from the previous Bedfordshire County Council. The Borough has approximately 35,800 children and young people up to and including 17 years of age equating to approximately 23% of the local population. The overall population within the Borough is growing with an increase since 2001 of almost 10,000. The local community is very diverse with 36.9% (7,536) of children and young people from non-White British backgrounds attending schools and 22.4% (4,572) with English not as their first language. In 2011 there were 2,098 births within which almost a third of children born to mothers who were themselves born outside the UK. The level of childhood poverty at 18.9% is higher than the regional average of 16.5%. Nine areas within the Borough are amongst the 10% most deprived in England.

The Bedford Borough Safeguarding Children Board (BBSCB) is independently chaired and is a shared arrangement with Central Bedfordshire with a Strategic Board dealing directly with Bedford Borough issues. Social care services for children and young people are delivered through a contact, referral and assessment team, two social work and safeguarding teams, one looked after children team, one children with disabilities team, one leaving and after care team and an intensive family support service (IFSS). Fostering and adoption, asylum services, youth offending, family group conferencing and the emergency duty team are all provided through shared service arrangements with Central Bedfordshire Council.

## 3. Governance & accountability

The membership of BBSCB meets all of the statutory requirements set out in the Children Act (2004) and Bedford Borough Council adult social services and adult mental health services are also represented. The Board also has access to appropriate expertise and advice from all the relevant sectors, including a designated doctor and nurse. Recent additional recruitment of members has occurred to meet the membership requirements of Working Together to Safeguarding Children 2013. Details of the full membership and attendance details of the Strategic Board for 2012/13 are set out in appendix B along with details of the Board and working groups.

The Strategic Board met on four occasions between April 2012 and March 2013 and is attended by senior representatives from each organisation involved in protecting or promoting the welfare of children. BBSCB demonstrates clear priorities through its business plan and specific areas of achievement such as the impact of multi-agency training and improvements in the quality of practice resulting from multi-agency audits. The BBSCB Independent Chair met frequently with the previous and current Executive Director for Children's Services, Schools & Families and has full access to director level representatives from other partner organisations. The Chair is also accountable to and meets regularly with the Chief Executive of Bedford Borough Council.

Representatives from the voluntary sector sit on the BBSCB and are actively engaged in a wide range of strategic and operational groups through the BBSCB. They are able to influence the development of services to support children and families. Strong collaboration between statutory and voluntary sector partners is enhanced through the secondment of some council staff to services provided by voluntary organisations and through some voluntary organisations delivering training to statutory partners.



The Portfolio Holder for Children Social Care, Councillor Sue Oliver, is a participating observer of the BBSCB who routinely attends the Strategic Board and receives all its written reports. The Executive Director for Children's Services, Schools & Families ensures that all Local Authority services engage effectively with the BBSCB and is held to account for the effective working of the BBSCB by the Chief Executive and challenged where appropriate by the Lead Member.

Whilst most key partners contribute well to the work of the BBSCB, as the responsibilities of public sector organisations change there is a need to have increasing involvement of key players such as GPs and schools. The BBSCB has worked with these partners to secure their active contribution and this work continues.

## Joint Working

Joint working with other Safeguarding Boards is a particular feature of BBSCB reflecting the practicalities of many partners, such as the Police, Probation and Health organisations who also work across the Central Bedfordshire and Luton Safeguarding Boards areas. In the past year the work of Child Death Overview Panel (CDOP), and the Child Sexual Exploitation (CSE) Task and Finish Group are examples of successful joint working by the three Boards and the Joint Steering Group and Performance Management & Audit group serve both Bedford Borough and Central Bedfordshire areas. Joint working arrangements are being reviewed to ensure that they appropriately serve the needs of all three Boards.

All partner agencies have their own appropriate governance arrangements to ensure that safeguarding is a priority at both a strategic and operational level. For example: Bedfordshire Police have a Children and Young Person Strategic Group chaired by the Assistant Chief Constable (ACC) (Crime and Local Policing) which meets every 3 months. All issues affecting service delivery for Children and Young People are dealt with by

this Group. The Police employ a Youth Coordination and Development Officer who sits on this group and assists the ACC to deliver the Strategic intent through the Public Protection Unit (PPU) Detective Superintendent.

## Financing and staffing 2012/13.

The work of the BBSCB is funded through contributions from partner agencies in line with a funding formula agreed by agencies in 2010 and adhered to since that time. The Business Support Unit and training function of the Board is shared with the CBSCB and the budget is managed centrally. It has been agreed that partner agencies maintain their budget contributions in 2013/14 at the level of 2012/13.

In January 2013, Bedford Borough Council commissioned a review of the joint working arrangements with CBSCB. This review has been carried out with the cooperation of all partners in both Boards and reported in the summer of 2013. At the time of writing this report, agreement has been reached to disaggregate the joint business support arrangements for the two Boards from 1st October 2013. This will lead to changes in the financing and staffing arrangements of BBSCB for the latter part of 2013/14. The training function will be subject to a review in 2013/2014.

The contributions to and expenditure from the BBSCB budget for 2012/13 were as follows:

Income 2012/13		Expenditure 2012/13	
Agency	Contribution (£)		Budget (£)
BBC	51,927.77	Staffing costs*	158,625.79
CBC	51,927.77	Cost of Independent chairs (2 boards)	38,064.88
Police	25,146.37	General costs i.e. printing, website maintenance, venue costs, stationary.	6,153.07
NHS Bedfordshire	69,437.10	<b>Total:</b>	<b>202,843.52</b>
Probation	7,906.10		
Cafcass	1,100.00		
<b>Total:</b>	<b>207, 445.11</b>		

\* Staffing costs include salaries for the 1.0 FTE Business Manager, 1.0 FTE administrator, 1.0 FTE Training Officer, 0.5FTE Training Commissioning and Development Manager

## 4. Child Protection Activity and Performance in Bedford Borough

At the start of 2012-13, the Board recognised the need for its performance reporting to more closely follow the suggestions within the Professor Munro's report on Safeguarding. As a result the Board Chair, Business Manager and the Chair of the Board's Performance sub-group were actively involved in regional Children's Improvement Board work to develop a new performance framework for Safeguarding Boards. This work was finalised in March 2013 and the new approach to performance reporting is being brought into practice during 2013-14.

Within the last year Bedfordshire Police dealt with 4128 Child Protection referrals into the Public Protection Unit (PPU) Support Team. All of these referrals were assessed and where required multiagency meetings took place to review and consider the type of support or investigation that would be required. Of these, 492 progressed to active investigation within the North Safeguarding Investigation Units (SIU).

Year Ending	No of Children in Bedford Borough	CIN (including LAC & CPP)	LAC	CPP's	Referrals to Vulnerable Children's Services
31 March 2013	36,100	1271	247	107	1480
31 March 2012	35,800	1298	215	165	1114
31 March 2011	35,600	1222	163	165	1225

CIN Reason	Open at year end (2012/13)
Abuse and Neglect	803
Child's Disability or Illness	149
Parental Disability or Illness	9
Family in Acute Stress	86
Family Dysfunction	78
Socially Unacceptable Behaviour	23
Low Income	4
Absent Parenting	23
Cases other than Children in Need	89
Not stated	7
<b>Total</b>	<b>1271</b>

**The following is a summary of child protection data in Bedford Borough Council for 2012/13:**

- As at 31st March 2013, 107 children were subject to a Child Protection Plan. This is a significant 29% reduction since 31st March 2012 when 151 children were subject to a Child Protection Plan. The current (per 10,000 population aged 0 -17) figure is now in-line with the statistical neighbour average, however is below the national average. This represents a number of sibling groups who were on a Child Protection Plan over 12 months under the category of Neglect where sustained improvements were not being achieved. This resulted in care proceedings being initiated and the children became LAC. This accounts for the increase number of proceedings and LAC against a reduction of children on a Protection Plan. Going forward it is anticipated that the implementation of a multi agency Early Help offer will reduce the numbers on Child Protection Plans as a significant proportion of families will be effectively supported with Child in Need (CIN) plans.
- 194 children had an Initial Child Protection Conference (ICPC) during 2012/13, 180 (93%) resulted in a Child Protection Plan, 14 (7%) did not result in a Plan. The number of ICPCs in 2012/13 represents an increase compared to the previous year when there were 173 ICPCs. Figures are now higher than both the national and statistical neighbour averages.
- Section 47 enquiries<sup>1</sup> increased during the year and are now in-line with statistical neighbours. Numbers are however significantly below the national average.
- Child Protection Plans ceasing in 2012/13 increased to 224 compared to 184 in 2011/12, an increase of 22%. As a result of the plans ceasing at a higher rate than the number starting, the overall child protection population has decreased.
- The predominant categories of plan in 2012/13 were neglect at 55%, compared to 41% nationally and emotional at 40%, compared to 30% nationally. Those subject to a plan under the category sexual remains low at 2%, compared to the national average of 5%.
- Children becoming subject to a plan for a second or subsequent time during the year was 14.4%, compared to 17.6% in the previous year, this in in-line with both national and statistical neighbour averages.
- During 2012/2013, 2.2% of children who had been subject to a Child Protection Plan for more than two years had their plans discontinued. At 31st March 2013 no children were subject to a plan for more than 2 years.

1. Section 47 enquiries – A section 47 enquiry is initiated to decide whether and what type of action is required to safeguard and promote the welfare of a child who is suspected of, or likely to be, suffering significant harm

- 100% of children subject to a Child Protection Plan have had their reviews held within timescale during 2012/13.
- 100% of children subject to a Child Protection Plan at year end had an allocated qualified social worker.
- 100% of children subject to a Child Protection Plan at year end had been visited to timescale.
- The predominant age of children subject to a Child Protection Plan at 31st March 2013 was 0-4 years (50%) followed by 5-9 years (28%). 7% of children are unborn.
- The number of looked after children in Bedford Borough has increased by 13% between 31st March 2012 and 31st March 2013. In 2012/13, 143 children became looked after and 110 children ceased being looked after compared to 124 admissions and 80 discharges from care during 2011/12. This represents a 15% increase in the number of children starting to be looked after and a 38% increase in children ceasing to be looked after over the year.
- Of the 247 children looked after at 31st March 2013, 67% had either been subject to a Child Protection Plan or was subject to a current Child Protection Plan.
- Overall at 31st March 2013 there were 1,271 Children in Need, this is a decrease compared to 31st March 2012 when there were 1,298 Children in Need.





## 5. Audit and Challenge

One of the core functions of the BBSCB is to monitor and evaluate the effectiveness of activities to safeguard and promote the welfare of children and advise organisations on ways to improve. This involves carrying out case reviews and audit work but also learning from the judgements of external inspections and audits, such as Ofsted and the Care Quality Commission (CQC). This work has been on-going all year.

### External Inspection and Audit

The inspection of safeguarding and services to looked after children in January 2012 identified 14 areas for improvement, three of which were for immediate action Elected members and the Chief Executive of Bedford Borough Council took decisive action to respond to inspection findings and recommendations through the;

- provision of additional resources and changes to the senior management structure within children's services.
- social worker capacity has been increased leading to more manageable caseloads.
- commitment to maintain 15 children's centres across the borough to provide early help and support.
- recruiting in July 2012 a new Executive Director of Children's Services followed by other changes within the senior management team.
- the vision for children's services and joint working across the partnership is clearer and underpinned by a sense of leadership and challenge and this provided the impetus for continuous service improvement.
- social workers and colleagues in other agencies have reported that they feel motivated by the new clarity of service objectives and want to contribute positively to an agenda for change.
- the new senior management team is aware of the strengths and weaknesses of current services, the need to secure greater levels of consistent practice across the range of children's services and to embed improvements.

In January 2013, Ofsted undertook an unannounced inspection of Bedford Borough's arrangements for the protection of children and were graded as 'Adequate' and found the following;

- Children and young people who may be at risk of significant harm are being effectively identified.
- Thresholds for service access are clearly stated and understood across the partnership and most contacts and referrals being made to children's social care are appropriate and lead to considered and proportionate action.
- All cases are allocated and children and young people are being suitably protected from significant harm.
- There is some slippage in the timescales for the completion of assessments as attention has been paid to improving the quality of work and practice within cases.
- The BBSCB which is shared with Central Bedfordshire is functioning adequately but does not provide the focus needed by the borough to fully implement and drive forward the vision for services held by senior managers and partner agencies.
- Good practice is exhibited relating to children and young people who are educated at home and the safeguarding support provided by the council. Additionally, performance on tracking children who go missing, including looked after children, is good.
- Parents and carers report that they are being helped by the provision of joint services and understand the reasons for interventions.
- The wishes and feelings of children and young people are being ascertained but this information is not always being used effectively within individual plans and by strategic planning groups.

For the full report please access it at <http://www.ofsted.gov.uk/inspection-reports/find-inspection-report>

In June 2012, the Joint Steering Group discussed the inspection report on the Bedfordshire Youth Offending Service (BYOS) following a visit by the Inspectorate of Probation. This report gave favourable comments about safeguarding by BYOS and there were no areas for improvement.

For the full report please access it at <http://www.justice.gov.uk/about/hmi-probation>

## Serious Case Reviews

During 2012 – 2013 no individual safeguarding cases reached the threshold requiring a Serious Case Review (SCR) In Bedford Borough, although 1 case was referred for consideration by the SCR Sub-Group. This case was referred to the Joint Performance Management and Audit group for a multi agency audit to be undertaken. The audit engaged practitioners and managers from all of agencies involved with the family and the findings and learning from the audit were disseminated to practitioners and managers across all services.

Following the publication of Working Together 2013, BBSCB has continued to work with CBSCB on considering approaches to Serious Case Reviews in the future and explore opportunities for developing an agreed approach. However following the decision to disaggregate the business support arrangements for the BBSCB and CBSCB and the review of Board's structure, BBSCB will develop its own independent SCR referral process during 2013.

## Bedford Borough Child Death Review

The Child Death Overview Panel (CDOP) is required by the statutory guidelines to review how and why children in Bedford Borough die and to ensure that agencies learn from their deaths where appropriate. From the 1st April 2012 to 31st March 2013 a total of 11 child deaths occurred of children residing in Bedford Borough. This is a decrease of 8 deaths on the previous reporting year and is comparable to the average number of deaths reported in the previous 4 years is just over 14 deaths per year. The majority of deaths were in the first year of life. 3 of the deaths reported were unexpected deaths i.e. the death was not anticipated in the 24 hours before the child died.

Although every death is a tragedy for those involved with the life of that child, and a rise in deaths is particularly concerning, statistically this increase in small numbers does not indicate that there is a trend of increasing risks to children and there are no common factors which have been identified in the increase in deaths. Locally the number of child deaths has decreased by 42% in Bedford Borough significantly. Due to the delivery of health services across Bedford, Central Bedfordshire and Luton, the CDOP process is managed across the three LSCBs rather than just for Bedford Borough.

### **The following is a summary of the work of the CDOP during 2012/13:**

- During 2012-2013 the panel met on 8 occasions and completed full reviews on 15 children residing in Bedford Borough. These cases were from 2011-2012 and 2012-2013. CDOP is not able to fully review a death until all information is gathered and other processes have been completed such as post mortem reports and coronial inquests. Of these 15 deaths 40% were in babies aged 0-28 days and 47% were in children aged between 28 days and 1 year of age.
- The main category of death was a perinatal event (42%) followed by chromosomal, genetic or congenital problem (35%)
- Modifiable factors were identified in 21% of cases, including unsafe sleeping practice, smoking and raised Body Mass Index (BMI).

As a result of the action plans and lessons learned from child deaths reviewed over the last four years, CDOP are working with Public Health to ensure there are pathways in place for pregnant women with raised BMI to access healthy living choices & reduce weight in pregnancy. The CDOP also ensures Public Health is aware of the modifiable factors in relation to smoking & receives feedback on campaigns & pathways for pregnant women who smoke. Bedford Borough Public Health is working jointly with Public Health in Luton to deliver workshops to health and social care staff concerning safe sleeping messages for parents.

A more in-depth analysis of deaths reviewed over a 4 year period is available in the CDOP annual report 2012-2013 which is also published on the BBSCB website [www.bedfordshirelscb.org.uk](http://www.bedfordshirelscb.org.uk)

### Joint Performance Management and Audit Group

The Joint Performance Management and Audit Group undertakes multi agency audits of specific cases, re-audits to evidence changes in practice as a result of learning from previous audits, and disseminates learning and messages from these audits to practitioners and managers across agencies for their reference and use in team meetings and briefings. The Joint Performance Management and Audit Group also receives updates from agencies in relation to auditing undertaken by individual partners.

Key learning is always shared with the LSCB training manager to ensure inclusion of local lessons in the multi-agency training programme and to inform the content and delivery of learning events.

#### **During 2012/2013 case audits have been undertaken in relation to:**

- specific case referred for review by partners, or by the Serious Case Review Panel (1 case),
- themes identified to support Business Plan objectives or specific areas of practice i.e. Strategy meetings and section 47 enquires (4 cases); core group meetings and domestic abuse (1 case) and;
- re-auditing issues identified in previous audits where practice concerns have been identified.

Some of these audits have been independently led and commissioned with neighbouring LSCBs, the findings and outcomes of which will be reported to the Board in October 2013. Audit activity is planned to increase in 2013/2014.

#### **There were several key areas of learning from audits that have been implemented as follows during 2012/13:**

- Multi Agency Public Protection Arrangements – agency leads have raised awareness within their own organisations of the purpose of MAPPA. The remit and scope of different risk assessments and definitions of harm and the importance of joint working;
- Reports for Child Protection Conferences, templates have been revised and re-launched for use by Police, Health and schools representatives;
- A review by the Designated Doctor and Nurse of the arrangements for undertaking child protection medicals in particular to promote photographic recording of injuries at the same time as medicals. Child protection medical reports identifying what information is shared with health professionals at the time of the medical and who is present, and prompts to key agencies to consider how an appropriate medical assessment can be undertaken when responding to a distressed child;
- Bedford Borough Council has ensured that all staff undertaking assessments are fully qualified;
- Agencies and in particularly Children's Social Care have reiterated the need to ensure appropriate inclusion and attendance at strategy meetings of key professionals involved with the families;
- Specific training has been delivered on the chairing and contributing to core group meetings'.

Issues arising from audits in relation to domestic abuse have resulted in the BBSCB retaining the focus on this area as one for future improvement in Bedford Borough, by inclusion in the business plans for 2013/14 and as a key priority for further work by partnerships.

## Section 11 Audit

Section 11 of the Children's Act sets out a requirement that partner agencies maintain safeguarding standards. There are eight standards and most LSCBs regularly require agencies to self assess their compliance with those standards. This is known as Section 11 auditing and during 2012 /13 an in-depth audit was undertaken by the BBSCB in conjunction with Luton and Central Bedfordshire LSCBs focusing on two of the s11 standards:

- Senior management commitment to the importance of safeguarding and promoting children's welfare.
- Effective inter-agency working to safeguard and promote the welfare of children.

The remaining six standards had been self-assessed by the partners during spring of 2012 and their findings were reported to the LSCB's Strategic Boards as part of the development of last year's Annual Report.

The findings of each partner regarding the two key standards were reported to their peers at a specially convened workshop in autumn 2012 with the Councils reporting their findings to partners at the autumn meeting.

## **There was evidence of the following improvements in safeguarding from the agencies' presentations;**

- A strong commitment and understanding of the importance of safeguarding at a senior level.
- A number of informal forums within agencies have been established to address safeguarding policy, practice and concerns.
- An increased understanding about what needs to be done, including awareness and anticipation of safeguarding issues and activity to address the issues. Agencies are responding very positively to inspections and audits.
- Greater integration between children/young people services and adult services.
- Learning from local and national Serious Case Reviews becoming more routinely embedded into training.
- Greater use of escalation procedures to raise concerns and evidence of its use between agencies.
- Improved involvement and engagement with children and young people.
- More internal training across a broader safeguarding agenda.
- More single agency safeguarding audits being undertaken.



**Areas for further consideration by the Boards in relation to the two standards are:**

- Agencies identified challenges with the Common Assessment Framework (CAF) particularly for those agencies working across three local authorities with different CAF processes. Stronger links between the CAF and early help/intervention need to be developed.
- Dissemination of learning from SCR's and case file audits needs to be even more embedded into practice and as part of reflective supervision. There is a need for agencies to agree how to evidence that the dissemination of learning is done and the impact it has on the outcomes for children.
- It was noted that as more training is delivered internally by individual agencies, this will have an impact on the take up of multi agency training provided by the Board. Agencies need to contribute more effectively to the multi-agency training process and increase their challenge around commissioning.
- The Strategic Board need to ensure that there is effective communication with frontline workers and vice versa.
- The co-location of multi-agency teams, needs to continue to be considered as opportunities arise.
- Commissioners, including the new Clinical Commissioning Groups have a challenge when commissioning Independent Contractors in ensuring that they are Section 11 compliant.
- Boards need to work with voluntary and faith groups to support them in undertaking Section 11 self assessments.
- A forum to be considered for the Councils and partner agencies to discuss the different multi-agency panels and processes across Bedford Borough and Central Bedfordshire.

The findings of this audit were used to develop the business plan for the BBSCB and individual partner planning processes for 2013-14. Additional information in respect of the Section 11 audit can be obtained from the BBSCB Business Manager.





## 6. Engagement with & participation of children

Individual agencies engage with children, young people and their families on a day to day basis and in addition put in place a number of additional activities to ensure the provision and delivery of services are in accordance with the views and wishes of children and their carers. Their views are then used to develop and improve services. Engagement opportunities that have informed the work of the BBSCB and partners include:

### Health

The PCT/BCCG gathers information on patient experience including children and young people which informs commissioning intentions/arrangements. In addition the PCT/BCCG undertakes both announced and unannounced visits to health providers and engages with children and their families about the services they receive. Bedfordshire Community Health Services Children's Services also participate in the patient survey "All Ears".

### Police

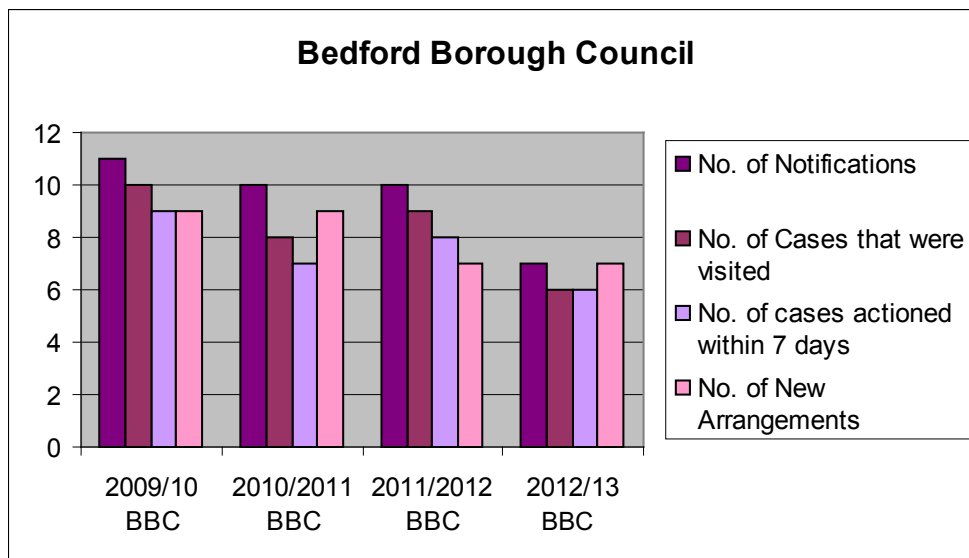
Bedfordshire Police's Youth Coordination and Development Officer sit on the Children and Young Persons Strategic Group and are able to ensure that young people's views are fed directly to the ACC. In addition the Police's Local Policing Teams link with safeguarding and PSHE leads for each school. Their focus is on the dangers of Social Networking on the internet.

### Private Fostering

The Children Act 1989 (section 66) defines private fostering as occurring when a child under 16 (or under 18 if disabled) is cared for and provided with accommodation, for 28 days or more by somebody other than a close relative, legal guardian or someone with parental responsibility. Close relatives are defined in the Act as step parents, siblings, brothers or sisters of the parents and grandparents. A private fostering arrangement is one which is made privately, that is to say without the involvement of the Local Authority. Examples of private fostering arrangements are;

- Children sent from abroad to stay with another family, usually to improve their English or for other educational purposes;
- Asylum seeking and refugee children placed with an adult known to them, their family or their community;
- Teenagers who, having problematic relationships with their parents, are staying in short term arrangements with friends or other non relatives;
- Children living with host families arranged by language schools or other organisations;
- Local children living apart from their families;
- Young people who have wanted to remain in this country to continue their education but whose parents have returned to their country of origin;
- Young children whose birth families are struggling to cope and turn to a friend or distant relative to care for the child.

Levels of activity in Bedford Borough declined from the previous year. There is no identifiable reason why this should be the case. Overall numbers remain small, but in line with statistical neighbours. Bedford Borough council have to monitor the age and place of birth in respect of children in private fostering arrangements. The majority of children are white British and aged over 10 years at the time the private fostering arrangement commences.



The Private Fostering annual report is part of the governance of the Private Fostering Provision required by Regulations and is presented to the BBSCB annually.

For the full report please go to [www.bedfordshirelscb.org.uk](http://www.bedfordshirelscb.org.uk)

## Missing Children

The Bedfordshire Police Missing Person Unit (MPU) saw their establishment reduce in the review from 6 constables to 4. The team continue to provide a specialist response to medium and high risk cases, some of which have involved children. The team work closely with the local authority however the Bi-monthly multi-agency meeting that did take place has now ceased due to lack of support across the three authorities. The national definition of a missing person has recently changed and now differentiates between missing and absent. This has allowed some professional judgement around which cases are afforded the close attention and resources.

Bedfordshire Police continues to support the Missing Persons Unit who have become a single point of contact for all enquiries around missing and absent children. The existence of the team ensures that there is a much greater emphasis by the Police on multi agency working, an improvement in both quantity and quality of safeguarding work undertaken.

The Police are looking to progress return interviews with Bedford Borough Children's Services. These will assist in identifying patterns of concern around some of the young people who may be placing themselves at significant risk due to drug misuse, Child Sexual Exploitation (CSE) and criminal activity. A series of "professionals" meetings would be held to discuss areas of concern and devise a plan of intervention, through working together.

# Highlights in 2012 / 13

Youth Innovation Zone  
Bedford  
Borough

£36k funding from central government to support innovation in positive activities young people. 9 pilot areas set up and supported in the Borough involving over 60 young people as decision makers, 20 adult community members and provided positive activities to over 600 young people.

**Youth Parliament**  
MAKING OUR MARK

1<sup>st</sup> ever young person with a disability elected to represent Bedford Borough nationally  
1<sup>st</sup> ever 11 year old elected to represent us nationally  
1<sup>st</sup> every young carer elected to represent us nationally

100+ children and young people took part in Take Over Day Activities including debating in the House of Commons, shadowing the Chief Exec and Directors, presenting youth issues to the Health and Wellbeing Board, being an Engagement Officer for the day

and more!  
children's commissioner's  
**TAKE OVER DAY 2012**

**SHORT BREAKS**

70+ young people with disabilities have shaped services including commissioning short breaks services, developing a grant giving out £15k and inputting into the short breaks statement

Trained 100+ professionals from schools, colleges, SEPT, voluntary sector and Bedford Borough Council on young carers awareness, consultation methods and principles of participation

engagement & development

Over 2000 consultation responses on 16 different topics throughout the year from children and young people. Over 150 sessions delivered in 2012/13

Bedford  
**LINK**  
Local Development Network

Working with local charity Bedford LINK we were able to deliver health themed consultations to over 300 children and young people on GP services, health and emotional wellbeing, exercise and positive lifestyles

## 7. Achieving our priorities

### Priority 1: Early Signs and intervention in respect of physical, emotional abuse and neglect

The effective delivery of help early in a child's development or early in time when things start to go wrong, leads to good outcomes for the child and potentially reduces the need for agencies to be involved in the long term. This is therefore a key priority area of work for the Board.

#### Achievements in 2012/13

- Delivered training to improve the awareness of early signs of abuse and neglect with 100% of GPs having a named Safeguarding Lead GP who has completed this programme. 2,300 individuals undertook online e-learning courses to raise awareness (including 86 young people aged 11-18, 73 of whom were considered competent). Validation and review of organisations basic safeguarding training was offered free of charge to all Board partners.
- Since the decommissioning of the Multi Agency Allocation Group (MAAG) CAFs have fallen – variety of reason for this but gradually CAFs submitted have started to increase again. CAFs being submitted now are more relevant and appropriate.
- Schools complete more CAFs than any other agency.
- Data collection for CAF is in place and information has been reported to BBSCB.
- Bedford Borough Council has introduced a role of Integrated Working Support officer which has been well accepted and through their role of offering support, advice and mentoring.
- This has helped in a definite improvement in the quality of CAFs and in practitioners following the process through TACs case closure.
- Voluntary organisations take on the Lead Professional role at Team around the Child meetings and are actively engaged in the Common Assessment Framework process.
- Bedford Borough Council is undertaking a review of training again with aim to make it more accessible to a broader range of practitioners.
- A draft early help strategy was presented to the BBSCB in the autumn with involvement of partners. Bedford Borough Children's Services are developing proposals to extend the current Intensive Family Support Service, including the Troubled Families initiative and

establish early help networks to become operational from April 2013.

- Bedfordshire Probation has delivered a specialised service to women offenders via 'Family Groups' at the Raleigh centre in Bedford. The service supports the diversion of women from custody and so supporting children from becoming parentless, by using specific and targeted interventions. The 'one stop shop' environment provides childcare and parenting advice, to positively impact on the increasing levels of identified child poverty and to address risk, need and support attendance and participation with services.
- Bedfordshire Probation has been focusing on audit and inspection of cases, to include those cases both where young offenders are moving through the criminal justice service to adult services and adult offenders who have children who are assessed as being in need.
- Results of work have led to Bedfordshire Probation revisiting their safeguarding policy and process in line with Working Together 2013 and defined clearer referral pathways into Children Social Care and familiarising staff with the CAF process. In depth multi agency audit of cases has supported action planning around further training for staff relating to the role of the children's social worker and a short staff survey looking at staff's understanding of child protection and children in need issues and definitions.
- A new multi-agency e-learning training course on risk assessment in safeguarding and awareness of child sexual exploitation is in place.
- BBSCB staff delivered face to face learning and development opportunities to consider and explore the impact of impaired parenting capacity arising out of parental mental illness, domestic abuse and parental substance misuse.
- Continued delivery of 'Child Centred Practice when Working with Resistant Families' courses to extend knowledge and understanding of the impact of neglect and its impact on workers' behaviours.
- Information has gone to all staff in Adult and Community Services which advises staff that where there are children in the family that they are working with and have a duty to consider if the children are in need of protection from harm. This information is shared with all staff teams on a regular basis during safeguarding training.

## Challenges and actions for 2013/14:

The Board sees the achievements of 2012-13 as a start in developing the improving Early Help rather than completed work; this will always be work in progress. The new national Working Together Guidelines, issued in March 2013 includes an expectation on Boards to evaluate early help to families and children. This Board's priority needs to incorporate the contribution of all partners to early help and initial evaluations of cases. The Board will seek assurance during 2013 – 2014 of the effectiveness of early help services from all partner agencies to understand the different activities, strategies and performance measures that are in place and in development.

Given CAF is about early intervention it has been identified that not enough CAFs for under 5s are being undertaken. Bedford Borough Council are working hard with Health Visitors and Children's Centres to remedy this and beginning to see some improvement. A review of the CAF form and review paperwork is underway in order to fit with the developments around the Multi Agency Safeguarding Hub (MASH) and Locality Network Panels (LNP)

The Ofsted inspection in January 2013 identified that while some effective services are firmly established, such as children's centres, other relevant services are in need of strengthening, including the use of the common assessment framework (CAF).

## Priority 2: Domestic Abuse

Local and national reviews of cases clearly show that families where there is domestic abuse lead to children experiencing emotional and physical harm.

### What have we achieved?

- 'SORTED' commissioned to deliver one to one therapeutic interventions for children aged 5 – 13 years affected by domestic abuse.
- Bedfordshire Probation Trust (BPT) has worked with Bedford Borough Council to deliver the Integrated Domestic Abuse Program (IDAP) for men not supervised by the Criminal Justice system. IDAP provides enhanced early intervention regarding domestic abuse. 12 men have commenced the program to-date and findings of effectiveness, delivered by Bedfordshire University will be available at the end of the financial year.
- Bedfordshire Probation "Caring Dads" programme: 38 men (had in excess of 110 children between them) attended the programme in 2012 with research findings evidencing significant improvements in men's awareness of children's developmental needs, knowledge and awareness of domestic abuse and greater understanding of what constitutes child-centred fathering. The project has recently been nominated for a Howard League for penal reform award.
- Inception of the Police Domestic Abuse Repeat Offender team (DARO) in Feb'13 has enabled better support to vulnerable victims of domestic abuse and their associated children, having dealt with 87 different offenders.
- Bedfordshire Domestic Abuse Partnership (BDAP) delivered multi-agency training in relation to domestic abuse foundation awareness (63 attendees); 'working with perpetrators' and a new course on 'awareness of female perpetrators' (23 attendees). Free events were also delivered for BBSCB partner agencies and voluntary sector to familiarise those working regularly with children and families in domestic abuse situations, with the role and function of the Multi Agency Risk Assessment Conference.
- BBSCB delivery of a face to face course on the Impact of Domestic Abuse on Children and a newly developed Teen and Dating Violence course that has been heavily oversubscribed and co-delivered with public health colleagues.
- Delivery of online E learning package - 'Domestic Violence Awareness'. Any applicant who has not completed the BDAP course was requested to undertake this online



course prior to attending any domestic abuse themed BBSCB course. This has led to increased awareness of domestic abuse.

- Responded to messages arising out of the Bedford Borough Domestic Homicide Review (2011).
- Domestic Abuse Awareness Raising Forum' held free of charge for frontline professionals and voluntary organisations across Bedford Borough raised awareness of domestic abuse and the services available.
- A pilot project in Bedford Borough and Central Bedfordshire and in relation to information sharing between the Police and Schools about domestic abuse incidents is currently underway as a means of ensuring earlier identification of and response to the impact of domestic abuse on children and young people. The outcomes will be evaluated.

### Challenges and actions for 2013/14

Domestic Abuse continues to be a priority for the Board. The work of the Bedfordshire Domestic Abuse Partnership and Bedford Borough Community Safety Partnership continues to drive partners' operational work on domestic abuse. Increasingly the BBSCB role needs to be the evaluation of the success of partners work and in the coming year the Board will strengthen its performance monitoring of domestic abuse initiatives and its evaluation of that work.

The development and establishment of a Multi Agency Safeguarding Hub (MASH) model.

The Ofsted inspection in January 2013 identified that the current screening arrangements for domestic abuse cases involving children and young people are inefficient as a significant number of referred contacts by the police to children's social care lead to no further action.

### Priority 3: Child Sexual Abuse and Sexual Abuse through Exploitation.

During the past eighteen months there has been a growing awareness of Child Sexual Exploitation and in November 2011, the Government published its National Child Sexual Exploitation Action Plan which identified LSCBs as the responsible partnership for implementing the Plan. BBSCB agreed to work jointly with the Luton and Central Bedfordshire Safeguarding Children Boards to develop and implement the local version of the national plan and a Task and Finish Group with representatives from across all three Boards has since then been managing that implementation.

#### What have we achieved?

- A strategy and action plan developed and adopted by the BBSCB with progress reports presented at the Strategic Board and Joint Steering Group.
- Completed a review of sexual exploitation procedures resulting in changes to practice and support processes available to work with children and young people.
- Piloting of Sexual Exploitation Risk Assessment Conference (SERAC) meetings from March 2013.
- The BBSCB website contains information for professionals, children, young people and parents/carers.
- A new therapy service for young people with sexual behaviours that are a risk to their peers (MST-PSB) was developed and commenced in June 2012. The number of referrals in Bedford Borough Council has been relatively low. At the end of June 2013 Bedford Borough Council had made 7 referrals to the project;
  - 3 referrals did not meet the criteria.
  - 1 young person was suitable but despite efforts of project staff mother refused the resource.
  - 1 successfully completed and maintained at home.
  - 2 referrals pending.

BYOS referrals have been less than expected and this reflects a fall in young people convicted of sexual offences in 2012/2013.

- Launched a leaflet for professionals and a CSE Toolkit in respect of identifying child sexual exploitation.
- Six briefing events were held jointly by Bedford Borough, Central Bedfordshire and Luton LSCBs, the third of which was used to launch the CSE Toolkit and promote awareness of the newly developed SERAC and free online E learning course -awareness of child sexual exploitation. These events were well received and attended by 697 workers, assisting in the identification of further development needs.
- Four courses were externally commissioned on the themes of 'worrying adolescent sexual behaviours' and 'prepubescent sexual behaviours'. 99 workers and volunteers attended, further courses have been commissioned for 2013-2014.
- The Lucy Faithfull Foundation delivered 'what's love got to do with it?' course in response to workers requiring more strategies with young people who are at risk of sexual exploitation.
- Two twilight briefings were held for Head Teachers and Chairs of Governors, including independent schools and academies. The briefings focussed on grooming behaviours exhibited by a sexual offender in a first school. 94 individuals attended, strengthening the links between the work of the LSCBs and schools. All schools have been asked to be vigilant about this area of work. One notable outcome was an increase of applications for safer recruitment courses. The Safer Recruitment course has been fully revised and jointly delivered with the LADO's. A total of 52 individuals in key management roles attended these courses.

#### **Challenges and actions for 2013/14:**

The Pan-Bedfordshire CSE Task and Finish Group continue to develop its work addressing the five shared key strategic priorities as follows:-

- 1. Preventing & intervening** early to prevent the occurrence of child sexual exploitation and should it occur to intervene at an early stage to reduce harm to actual and potential victims.
- 2. Safeguarding** to ensure that in all circumstances the safety and welfare of individual children and young people is of paramount importance.
- 3. Disrupting activity** in the interests of protecting children, then the disruption of offenders grooming or exploitation activities is a legitimate and appropriate response which can only be successfully achieved by strong partnership working.
- 4. Bringing offenders to justice** when sufficient evidence can be obtained to support a prosecution.
- 5. Engendering public confidence** by raising general awareness of the issue and showing all communities that a proactive and proportionate response will be made to the risk.

This is reflected in the BBSCB Business Plan for 2013/14 with the intention that the work being carried out by the Task and Finish Group will become absorbed into normal management processes by the end of the year and the Board's role will then focus more on evaluating partners' effectiveness in countering sexual exploitation.

## Priority 4: Develop the BBSCB Board

During 2012-13 BBSCB prioritised a number of issues which were designed to improve the functioning of the Board and the partnership it coordinates. These included working to improve performance monitoring and auditing, recruiting lay members to ensure the full Board complement, developing relationships with new bodies such as the Health and Wellbeing Board, improving work with schools and better dissemination of information from CDOP and the section 11 audit processes.

### What have we achieved?

- Bedford Borough Council present timely performance information to each Strategic Board meeting.
- Board members played an active part in developing a regional performance framework for LSCBs which was published in March 2013.
- Lay Member recruitment to BBSCB is underway.
- Regular discussions at the Board regarding the new NHS arrangements and engagement with Clinical Commissioning Groups (CCGs), a CCG representative has been appointed to the Board.
- Adult Services have representation on the Board and Children's services on the Adult's Safeguarding Board to ensure that any issues relating to child protection and agency response can be brought to a strategic level to ensure effective and efficient joining up of the strategic agendas.
- Improved working relationships between Adult Safeguarding Teams and the LADO.
- Protocols completed to ensure that adult alerts which identify children are discussed with Children's Services to ensure the child's needs are taken into account.
- Support and information provided to education staff in Bedford Borough Council, governors, staff of individual schools and academies to improve safeguarding for pupils and students. The Chair of the Board has also discussed safeguarding with governors at their forums and specific sessions addressing 'safer staffing'.
- Event arranged for the BBSCB to meet with school staff on the 17th July 2012 and 2 Head teachers have now been identified as being members of the Strategic Board and Joint Steering Group.

- Twilight and evening sessions have been held with school staff on the 24th October 2012 to disseminate the learning from the Somerset First School SCR.
- Lessons learned & emerging themes arising from the review of child deaths have been widely disseminated via quarterly multi agency CDOP teaching sessions, level 3 safeguarding training, GP safeguarding training and via a CDOP newsletter.
- Successfully held a workshop with Luton LSCB, CBSCB and BBSCB for partners to challenge each other on their performance against s11 safeguarding standards.
- The Voluntary Organisations for Children, young people & families (VOCyfp) has two representatives on the Strategic Board who are able to influence the decision making process and feed back to the Board on emerging needs. There are VOCyfp representatives on the task and finish groups for Child Sexual Exploitation, and the appointment of a lay member to the Strategic Board.

### Challenges and actions for 2013/14

Several of the streams of work within this priority were delayed as the publication of Working Together and the regional performance framework for LSCBs arrived later than anticipated. As a result some of the activity has been rolled over into the 2013-14 BBSCB Business Plan for completion.

The new performance framework should be in use by the BBSCB during the autumn 2013. This is only the first step as partners need to be able to fulfil their responsibility to both supply information and analysis for discussion and their peers need to then produce supportive yet challenging discussions so that safeguarding can improve.

The approach to dissemination of information will be developed (along with the performance reporting process) to create a learning and development framework as required by Working Together 2013.

Further to the Ofsted Inspection in January 2013 the BBSCB commissioned a review of the arrangements with CBSCB and this led to the proposal to disaggregate the Boards.

## Priority 5: Implement or Monitor the implementation of relevant recommendations from the Munro Review, and Ofsted, CQC/IST & HMIP Inspections

At the start of the 2012/13 year, the Board was waiting for the publication of new Working Together guidelines following the Munro Review. It was also awaiting Ofsted/CQC reports following inspections of Safeguarding and Looked After Children and the effectiveness of the Bedfordshire Youth Offending Service (BYOS). Following an Ofsted Inspection of Child Protection in Bedford Borough in January 2013, a review of the joint arrangements between BBSCB and CBSCB was commissioned. Although such a review was not foreseen in the BBSCB Business Plan, the review became an immediate priority for the Board. This review has now been concluded and has led to the disaggregation of the two Boards.

### What have we achieved?

- Monitored the implementation of the partners' Improvement Plan following the February 2012 Ofsted Inspection and addressed all issues regarding the Board's responsibility for safeguarding raised by the inspection.
- The Joint Steering Group discussed the BYOS inspection report and agreed that there was no need for action by the Board.
- The Board's Business Plan prioritised the Munro report's recommendations regarding LSCBs, namely the production of an annual report, the evaluation of early help, and the consideration of systems methodology for case reviews. These recommendations were further clarified in Working Together 2013.
- Fully engaged in the review of joint arrangements with the CBSCB.
- The Ofsted Improvement Plan was presented to the Strategic Board on the 17th July and all appropriate actions integrated into this business plan.

### Challenges and actions for 2013/14

The Working Together guidelines were not published until March 2013. During the coming year, much of the development of the Board will therefore be about implementing the changes required by the new guidelines which include the development of a Learning and Improvement framework, welcoming new Board members, improving its focus on outcomes and developing an appreciation of the systems approach to case review. BBSCB will also need to ensure that it effectively monitors the implementation of the Working Together guidelines by individual partners where they have specific responsibilities.



## 8. Multi-Agency Training

During 2012/13 there were 63 face to face courses delivered over 74 days to a total of 1,848 delegates. Satisfaction with courses ranged from 95-98%. Face to face learning and development activity ranges from the sixteen 2 day Safeguarding and Interagency Working courses delivered over the year to ½ day refresher courses for schools and a variety of specialist courses for workers and volunteers. Please see appendix C for details of the training delivered during 2012/13 and details of the outcomes and satisfaction with courses.

**During 2012/13 the range of E-learning courses offered was extended and several packages completed that were essential pre-requisite learning for delegates undertaking some face to face courses.**

**Notable aspects of the training include:**

- Most learning events were regularly over-subscribed and extra 2 day courses have been arranged to accommodate delegates from across the extended children's workforce.
- Partners are provided with quarterly attendance, end of day and impact evaluation reports.
- Evaluation is through quantitative and qualitative data to seek to assess the actual impact of training on professional delivery of safeguarding services.

Free Online E learning has continued to be provided with a charge made for Private and Independent Organisations. The On Line E learning menu has been extended during 2012/13 to offer a range of online Awareness of Child Abuse and Neglect courses. The number of delegates undertaking online E learning courses have increased considerably between 2011/12 and 2012/13. Evaluation of the e-learning courses demonstrates that learners find the system easy to use and effective.

The Voluntary Organisations for Children, young people & families (VOCyfp) recognise the high quality training provided by the BBSCB which is free of charge to voluntary agencies. The uptake of this training by voluntary sector organisations is good and has enabled the up skilling

and networking of staff in a multi-agency setting which is critical to keeping children safe. The VOCyfp would like to thank partners for this continued offer of free training.

The training programme is informed by the BBSCB Business Plan 2012-2013 priorities.

### **Challenges and actions for 2013 – 2014**

- In response to the disappointing completion rate of e-learning of 85% the training function have adopted an automated Learner Self Registration system for On line learning which will respond and allow immediate access to training, thereby minimising delay or postponement to a worker or volunteer motivated to learn and extend his or her safeguarding knowledge. This facility will also provide an automated reminder and an enhanced BBSCB/CBSCB management system. This system will go live in November 2013.
- The charitable and funding arrangements pertaining to community interest companies and other 'social enterprises' were researched by BBSCB/CBSCB with the advice of the Charities Evaluation service and the VOCyfp. The information will be used going forward to review charging policy and ensure fairness and best value for BBSCB and CBSCB partners in 2013-2014.
- The BBSCB/CBSCB Training Function is currently under review.



## 10. Priorities for BBSCB for 2013-14

In its discussions about priorities for 2013-14, the BBSCB are committed to improving safeguarding in Bedford Borough and ensure that both national and local safeguarding themes were taken forward. However, it is also aware that there are currently very real pressures on resources across partner agencies and that in this situation a few priorities with significant progress was likely to give greater improvement than very wide ranging priorities which would need substantial investment of time and budgets. As a result the BBSCB agreed four high level strategic priorities:

**Strategic Priority 1:** Ensure Continuous Improvement in Efficiency and Effectiveness of the Board and its work streams to ensure focus on local safeguarding priorities and need.

**Strategic Priority 2:** Strengthen and implement multi-agency agreed thresholds for intervention and Early Help provision in order to promote more effective services to safeguard vulnerable children and young people.

**Strategic Priority 3:** The Board to assure itself that the voice of the child is heard and that there is evidence that their wishes and feelings are both asked for and taken into account in order that all agencies are aware, and respond to the specific needs of young people for support and protection.

**Strategic Priority 4:** Ensure Effective Performance Management Framework is in place to ensure that it is clear how performance will be managed and become an integral part of learning and improvement.

Within these 4 strategic priorities the following issues will be addressed;

- Domestic abuse
- Sexual Abuse of children and young people through exploitation
- Early help
- Developing the Board

In Bedford Borough Council the engagement and development services have the following activities highlighted for the next year which will feed into the annual report for 2013 – 2014



# What's on in

## 13/14

Development of resources for schools, children coming into care, young carers and support staff including the online schools secure website, CiCC website, Young Carers school toolkit



Training programme developed by young people for staff and elected members to be launched summer 2013. Activity week through partner 4YP



Young people with and without disabilities deciding on £40k of capital funding for children and young people in the Borough



The young people have met the Operations Manager for Stagecoach and the Portfolio Holder for Transport asking lots of questions about cost, accessibility and safety of public transport. Next is the transport forum!

Young people with and without disabilities  
**healthwatch**  
Bedford Borough



will be inspecting health settings and reporting to the adult steering group



Young people are working on a survey of children and young people's support services locally and developing materials for Anti Bullying Week 2013



10 focus groups will be delivered with children and young people supported by social care services over the next 6 months finding out their experiences

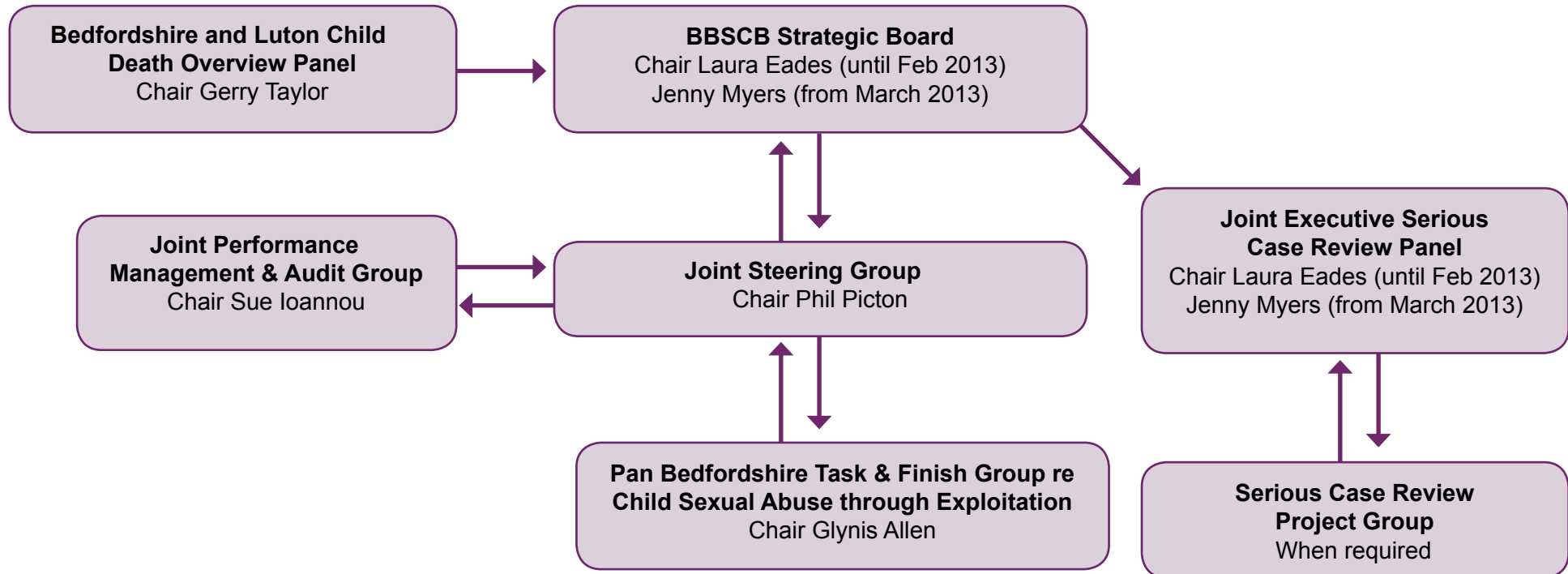


Young people are currently asking people their experiences about apprenticeships and access to support to find Jobs. They will report their findings in the Summer 2013

## Glossary:

ACC	Assistant Chief Constable	MARAC	Multi Agency Risk Assessment Conference
ADCS	Association of Directors of Children's Services	MASH	Multi Agency Safeguarding Hub
BBSCB	Bedford Safeguarding Children Board	MST-PSB	Multi Systemic Therapy – Problem Sexual Behaviours
BCCG	Bedfordshire Clinical Commissioning Groups	NHSCB	National Health Service Commissioning Board
BDAP	Bedfordshire Domestic Abuse Partnership	PCT	Primary Care Trust
BMI	Body Mass Index	PPU	Public Protection Unit (Police)
BPT	Bedfordshire Probation Trust	SALT	Speech and Language Therapy
BYOS	Bedfordshire Youth Offending Service	SCIE	The Social Care Institute for Excellence
Cafcass	Children and Family Court Advisory and Support Service	SCR	Serious Case Review
CAF	Common Assessment Framework	SEPT	South Essex Partnership Trust
CAMHS	Children & Adolescent Mental Health Services	SERAC	Sexual Exploitation Risk Assessment Conference
CBC	Central Bedfordshire Council	SIU	Safeguarding Investigation Units (Police)
CBBSB	Central Bedfordshire Safeguarding Children Board	SLA	Service Level Agreement
CDOP	Child Death Overview Process	SMART	Specific, Measureable, Achievable, Realistic, Timely
CEOP	Child Exploitation Online Protection	SUDI	Sudden Unexpected Death in Infancy
CPP	Child Protection Plan	TAC	Team Around the Child
CQC	Care Quality Commission	VOCyfp	Voluntary Organisations for Children, young people & families
CSE	Child Sexual Exploitation		
CSP	Community Safety Partnership		
CTB	Children's Trust Board		
CYPP	Children and Young People's Plan		
DA	Domestic Abuse		
DARO	Domestic Abuse Repeat Offender		
DfE	Department for Education		
EHA	Early Help Assessment		
GP	General Practitioner		
HMIP	Her Majesty's Inspection of Prisons		
LA	Local Authority		
LADO	Local Authority Designated Officer		
LSCB	Local Safeguarding Children Board		
MAPPA	Multi Agency Public Protection Arrangements		

## Appendix A





## Appendix B

Membership and attendance at the three meetings of the Strategic Board for the Bedford Borough Safeguarding Children Board during April 2012 – March 2013

Board member	Agency	17th July 2012	9th October 2012	22nd January 2013	Extra ordinary meeting 28th February 2013
Anita Hemsley (Joined Jan 2013)	Bedford Borough Schools	/	/	Yes	No
Anne Murray	NHS Bedfordshire	Yes, Helena Hughes represented Anne	Yes	Yes	Yes – Clare Saunders represented Anne
Cllr David Sawyer	Bedford Borough Council	Yes	Yes	No	Yes
Cllr Sue Oliver	Bedford Borough Council	Yes	Yes	Yes	Yes
Dawn Andrews	SEPT	Yes	Yes	Yes	Yes
Emma Osborne	Probation	No	No	Yes	No
Jane Stuart	CAFCASS	No	No	No	No
John Bruynseels	Bedford Borough Council	Yes	Yes	Yes	Yes
Jane Winterbone	Bedford Borough Council	Yes	Yes	Yes	Yes
Jenny Myers	Chair BBSCB (from Feb 2013)	/	/	/	Yes
Laura Eades	Chair BBSCB (Left Feb 2013)	Yes	Yes	Yes	Yes
Linda Bulled	Vol sector	Yes	No	Yes	Yes
Nina Fraser	Bedford Hospital	Yes	Yes	Yes	Yes
Margaret Dennison	Bedford Borough Council	Yes	Yes	Yes	Yes
Marcie Taylor	Bedford Borough Council	Yes	No	Yes	Yes
Simon Westwood (Left in Jan2013)	Bedford Borough Council	Yes	Yes	/	/
Nigel Stone	Beds Police	Yes	Yes - Will Hawkes represented Nigel	Yes	Yes
Wendie Lovatt	Home-Start Bedford Borough	Yes	Yes	Yes	Yes
<b>BBSCB Business Unit</b>					
Sally Stocker	BBSCB Business Manager	Yes	Yes	Yes	Yes
Sue Fanthorpe	BBSCB Secretary	Yes	Yes	Yes	Yes



## Appendix C

### Multi Agency training provision from April 2012 – March 2013

Course title	No. of courses held	No. of delegates attended
2 day Safeguarding Children course	16	338
2 day Evidence, Reflection & Judgement course	2	36
1 day Domestic Abuse – The Impact on the Child	3	59
½ day Substance Misuse	2	31
1 day Disabled Children	3	52
1 day Parental Mental Health	4	59
½ day Refresher	4	88
½ day Working in Core Groups	2	21
2 hour MARAC briefing	3	44
3 day Supervision Skills	1	17
1 day Constructive Challenge	2	34
1 day Child centred practice when working with resistant families	3	53
1 day Pre pubescent children who display sexually harmful behaviour	2	46
1 day Adolescents who display harmful sexual behaviours	2	43
1 day Leading/ Chairing Core groups	1	17
1 day Teen & Dating Violence	3	66
1 day Safer Recruitment	3	52
1 day What's Love Got To Do With It?	1	17

## Appendix C

### Training Outcomes

Training outcomes during 2012/13 for those who completed feedback questionnaires on face to face courses were as follows:

	2011/12	2012/13
Face to face courses:		63
Days of face to face training		74
No. of delegates		1848
Course completely/mostly achieved its objectives	98%	98%
Course completely/mostly relevant to job role	96%	95%
Course completely/mostly enabled development of new knowledge/skills	97%	97%
Significant or moderate impact of training in a multi-agency setting	-	95%

During 2012/13 the online learning courses delivered the following:

Category	Licences issued	Passes
Awareness of Child Abuse and Neglect	2391	1771
Safeguarding Children from Abuse by Sexual Exploitation	275	124
Parental Mental Health	113	62
Safer Recruitment	100	37
Risk Assessment in Safeguarding	65	28
Safeguarding Everyone: Protecting Children, Young People and Vulnerable Adults	141	89
Total (12/13):	3085	2,111 (68%)
Total (11/12)	1177	1000 (85%)

**Feedback from attendees of courses includes:**

*"I now feel confident on what signs to look for and how to handle my suspicions."*

(An Introduction to Safeguarding Children)

*"The kinds of mental health problems, cases and symptoms were really informative. The impact to children and the risk assessment was also valuable in my future career practice."*

(Parental Mental Health)

*"I will use what I have learned from this course when I become a mentor in September and if someone that I know has any problems in their day to day life I will be able to give them the appropriate advice and listen to what they have to say."*

(Think Safe Be Safe Stay Safe)

*"A wide range of information, including aspects such as 'Financial Abuse' and 'Institutional Abuse' which have not always been covered in previous training undertaken."*

(Safeguarding Everyone: Protecting Children, Young People and Vulnerable Adults)

*"When working with children I will feel confident in identifying abuse."*

(Awareness of Child Abuse and Neglect – Core)

The Bedford Borough Safeguarding Children Board Annual Report 2012 – 2013, has been contributed to by all BBSCB Board members and produced by the BBSCB Independent Chair and Business Manager.

The report was approved by the Board at their meeting in October 2013.

Should you require clarification on any matters in this report then please contact:

**Sally Stocker**

BBSCB Business Manager, BBSCB Business Unit

Bedford Borough Council  
Borough Hall  
Cauldwell Street  
Bedford

Tel: 01234 276512

E-mail: [sally.stocker@bedford.gov.uk](mailto:sally.stocker@bedford.gov.uk)







## Finding out more

If you would like further copies, a large-print copy or information about us and our services, please telephone or write to us at our address below.

Për Informacion	معلومات کے لئی	للمعلومات
برای اطلاع	Za Informacije	তথ্যের জন্য
ਜਾਣਕਾਰੀ ਲਈ	Informacija	Per Informazione



**01234 276512**



**Sally Stocker**

BBSCB Business Unit

Borough Hall

Cauldwell Street

Bedford MK42 9AP



**sally.stocker@bedford.gov.uk**



**www.bedford.gov.uk**